

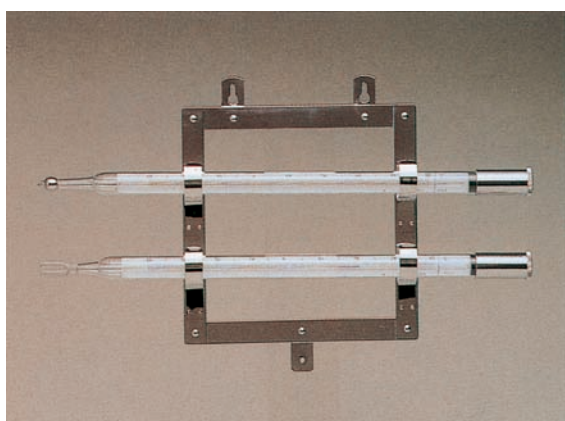
No. 7220 RUTHERFORD MIN-MAX THERMOMETER

SPECIFICATIONS

Measuring range: Max. Thermometer -20 to +50°C
 Min. Thermometer -30 to +50°C (-40 to 40°C)
 Min. graduation: 0.5°C
 Accuracy: ±0.5°C
 Dimensions: 40 x 370 x 20 mm (each)
 Weight (approx.): 0.4 kg (each)

MODEL:
 7220-00 RUTHERFORD Max-min. Thermometer set
 7220-10 RUTHERFORD Maximum Thermometer
 7220-20 RUTHERFORD Minimum Thermometer

* J.M.A. certified type is available.



No. 7240-00 FOOSE MIN-MAX THERMOMETER

SPECIFICATIONS

Measuring range: Max. Thermometer -30 to +50°C
 Min. Thermometer -40 to +40°C
 Min. graduation: 0.2°C
 Accuracy: ±0.2°C
 Dimensions: Thermometer 380 mm x 17 mm dia.
 Metal frame 250 mm x 210 mm
 Weight (approx.): 0.5 kg (inclusive of metal frame)

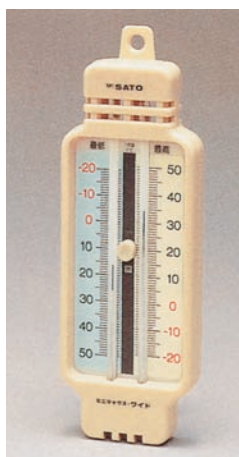
* J.M.A. certified type is available.



No. 8011-68 DIGITAL MIN-MAX THERMOMETER MODEL PC-6800

SPECIFICATIONS

Measuring range: External Sensor -50 to 70°C
 Built-in Sensor -5 to 50°C
 Accuracy: ±1°C at 0 to 40°C
 Cord: 3 m
 Dimensions: 98 x 103 x 20 mm (each)
 Weight: 0.145 kg

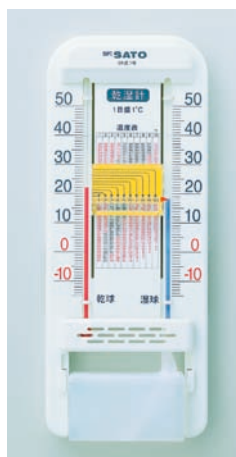


U-TUBE MIN-MAX THERMOMETER

SPECIFICATIONS

Min. graduation: 1°C
 Accuracy: ±1°C
 Dimensions: 76 x 220 x 25 mm
 Weight : 0.14 kg

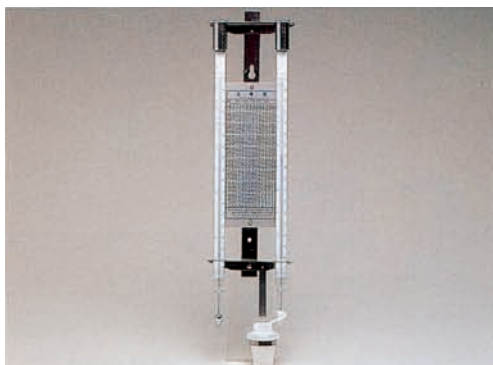
MODEL
 1506-00: Measuring range: -20 to 50°C
 1506-50: Measuring range: -40 to 50°C



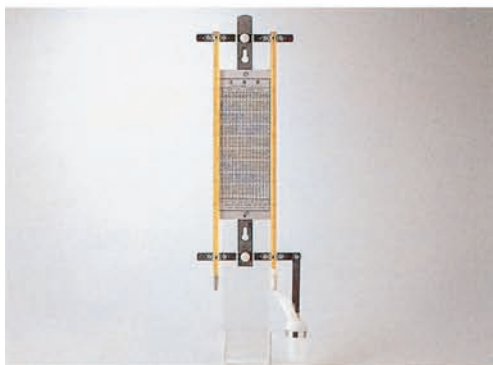
No. 1519-00 PSYCHROMETER SK-1

SPECIFICATIONS

Measuring range: -10 to 50°C
 Min. graduation: 1°C
 Accuracy: ±1°C (at 0 to 30°C)
 Dimensions: 28 x 260 x 104 mm
 Weight : 0.12 kg

**No. 7360-00 FOOSE PSYCHROMETER****SPECIFICATIONS**

Measuring range: -30 to $+50^{\circ}\text{C}$
 Min. graduation: 0.2°C
 Accuracy: $\pm 0.2^{\circ}\text{C}$
 Accessories: Metal frame, conversion table
 Dimensions: 440×117 mm (including metal frame)
 Weight: 0.3 kg (inclusive of metal frame)

**No. 7320-00 AUGUST PSYCHROMETER****SPECIFICATIONS**

Measuring range: -20 to $+50^{\circ}\text{C}$
 Min. graduation: 0.5°C
 Accuracy: $\pm 0.5^{\circ}\text{C}$
 Accessories: Metal frame, conversion table
 Dimensions: 420×110 mm
 Weight: 0.14 kg

**No. 7540-00 PRECISION HAIR HYGROTHERMOMETER (HIGHEST I)****SPECIFICATIONS**

Sensors: Human hair for humidity
 Glass thermometer for temperature
 Measuring range: 20 to 100% for relative humidity
 -10 to $+50^{\circ}\text{C}$ for temperature
 Min. graduation: 1% for relative humidity, 2°C for temperature
 Accuracy: $\pm 3\%$ for R.H. at 40 to 80% and 15 to 25°C
 $\pm 5\%$ at other than above
 $\pm 2^{\circ}\text{C}$ for temperature
 Dimensions: 150 mm dia. x 40 mm
 Weight: Approx. 0.28 kg

**No. 7542-00 HAIR HYGROMETER WITH DIGITAL THERMOMETER (HIGHEST II)****SPECIFICATIONS**

R. Humidity: Measuring range: 20 to 100%
 Min. graduation: 2%
 Accuracy: $\pm 4\%$ for R.H. at 40 to 80% and 15 to 25°C
 $\pm 7\%$ in other than above
 Temperature: Measuring range: -20 to $+60^{\circ}\text{C}$
 Resolution: digital display every 0.1°C
 Accuracy: $\pm 1^{\circ}\text{C}$ for temperature at 0 to 40°C
 $\pm 2^{\circ}\text{C}$ for other than above
 Dimensions: 135 (D) x 33 (T) mm
 Weight: 0.35 kg
 Accessories: Bracket: 160 (D) x 4 (T) mm, "AA" size battery x 1

**No. 7562-00 HYGROTHERMOMETER (PALMA II)****SPECIFICATIONS**

Sensors: Synthetic hair for humidity
 Glass thermometer for temperature
 Measuring range: 20 to 99% for relative humidity
 -10 to $+50^{\circ}\text{C}$ for temperature
 Min. graduation: 1% for relative humidity, 5°C for temperature
 Accuracy: $\pm 4\%$ for R.H. at 30 to 80% and 15 to 25°C
 $\pm 8\%$ at other than above
 Dimensions: 105 mm dia. x 18 mm (D)
 Weight: Approx. 0.1 kg

No. 7450-00 ASSMANN TYPE PSYCHROMETER MODEL SK-RHG

FEATURES

- Can be used any convenient place with a compact stand. (Option)
- A water reservoir is provided. It's suitable for continuous observation.
- Continuous operation for 20 hours with 2 batteries (3 VDC) is possible.
- Power requirements both of AC and DC are available.
- Easy to fix thermometers using a screw cap without metal cap so far in use.
- By adopting the wick, no need to wrap the wet bulb with cotton gauze.

SPECIFICATIONS

Thermometers: Dual-tube thermometer mercury filled

Measuring range	: 0 to +50°C
Division	: 0.2°C
Accuracy	: ±0.2°C
Length	: 30 cm

Instrument

Speed of air flow	: 3 m/s ~ 5 m/s
Power requirements	: 3 VDC ("D" size battery x 2) or AC adapter
Battery life	: About 10 hours (continuously use at more than 3 m/s)
Outer dimensions	: 452 (H) x 80 (W) x 110 (D) mm
Weight	: Instrument : 0.74 kg (exclude batteries)
	: Stand (option) : 1.65 kg

Standard accessories;

Water supply bottle, Dust proof cover, Humidity conversion table, Humidity conversion rule, Calibration certificate for thermometers, 20 wicks, "D" size battery x 2, Instruction manual, Carrying case (possible to accommodate all accessories),

OPTION

- **Spare thermometers:** 2 pcs./set, w/calibration certificate

Mercury filled thermometers

	Range	Div.	Accuracy
No. 7450-50	0 to +50°C	0.2°C	±0.2°C
No. 7450-60	-30 to +50°C	0.2°C	±0.2°C
No. 7450-65	0 to +40°C	0.1°C	±0.2°C

Alcohol filled thermometers

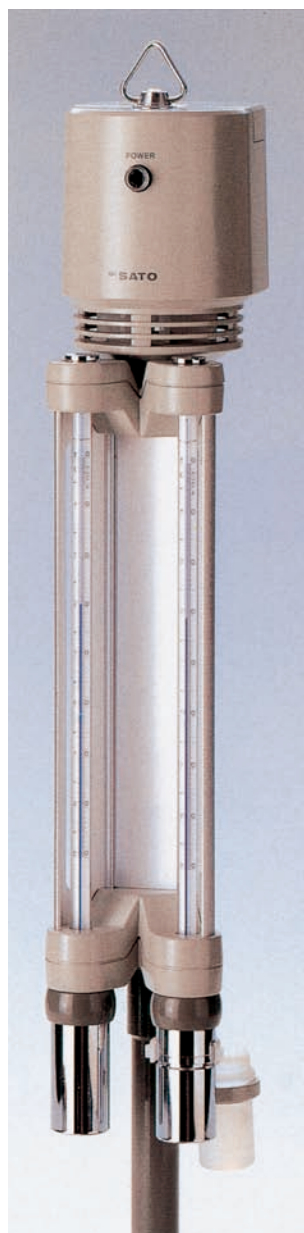
No. 7450-67	0 to +50°C	0.2°C	±0.2°C
No. 7450-68	-30 to +50°C	0.5°C	±0.5°C

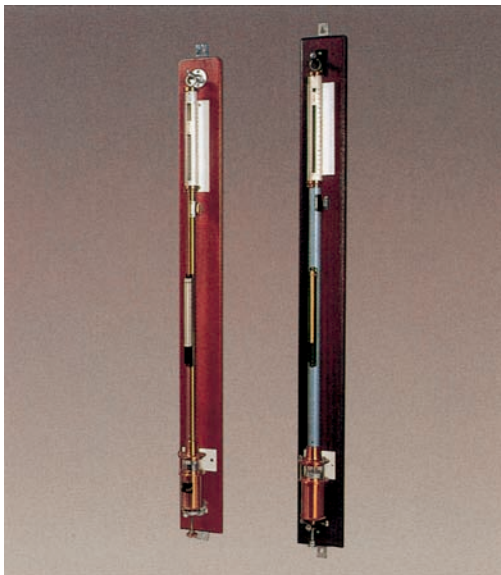
• **Stand**

- No. 7450-30 Compact stand in exclusive use for SK-RHG
- No. 7450-40 Tripod in general use for Assmann Psychrometer

• **Others**

- No. 7450-70 Spare wicks in exclusive use for SK-RHG (60 pcs./box)
- No. 7450-75 AC Adapter (for 100 VAC)





No. 7640-00 PRECISION FORTIN BAROMETER

SPECIFICATIONS

Type: Fortin (Mercury column)
 Tube bore: 10 mm
 Scale: 870 to 1,090 hPa
 650 to 820 mm Hg
 Vernier: 0.1 hPa & 0.1 mm
 Accuracy: ±0.5 hPa
 Thermometer: Hg glass thermometer -20 to +50°C (0.5°C)
 Dimensions: 1,130 (H) x 100 (W) x 100 (D) mm
 1,100 (H) x 110 (W) x 100 (D) mm
 (J.M.A Certified type)
 Weight: Barometer, approx. 2.5 kg
 Mounting board, approx. 1.8 kg
 (J.M.A Certified type)
 Barometer, approx. 3.4 kg
 Mounting board, approx. 2.3 kg

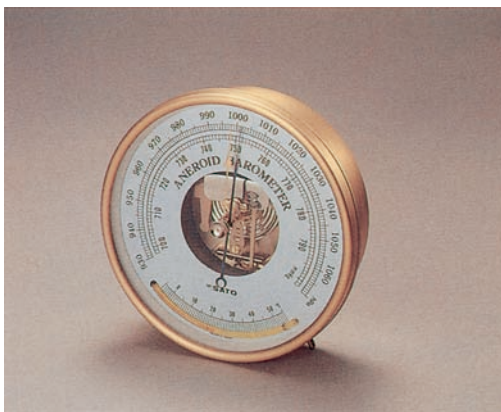
(*) For Safety shipping, mercury is separately packed in a glass container.
 (except J.M.A certified type)



No. 7612-00 BAROMETER WITH DIGITAL THERMOMETER

SPECIFICATIONS

Air pressure:
 Measuring range: 945 to 1,045 hPa (black scale)
 710 to 780 mm Hg (red scale)
 Graduation: 1 hPa/ 1 mm Hg
 Accuracy: ±1 hPa at 980 to 1,020 hPa
 ±3 hPa at other range
 Temperature:
 Measuring range: -20 to +70°C
 Resolution: 0.1°C
 Accuracy: ±1°C (0 to 40°C)
 Dimensions: 135 (D) x 33 mm (T)
 Weight: 0.25 kg
 Accessories: Bracket: 160 (D) x 4 (T) mm
 "AA" size battery x 1



No. 7610-20 ANEROID BAROMETER WITH THERMOMETER

SPECIFICATIONS

Measuring range: 930 to 1,070 hPa, 700 to 800 mmHg
 Min. graduation: 1 hPa / 1 mm Hg
 Temperature compensation: Bimetal
 Accuracy: ±1 hPa at 980 to 1,020 hPa at other range
 Temperature: Glass thermometer
 Range: 0 to +50°C
 Accuracy: ±1°C
 Usable altitude: Up to 500 m
 Case material: Brass
 Dimensions: 155 mmφ x 50 mm (D)
 Weight: Approx. 0.85 kg

The relation between elevation and air pressure (JIS W02101)

Elevation (m)	Air pressure (hPa)	Mercury column (mmHg)	Elevation (m)	Air pressure (hPa)	Mercury column (mmHg)	Elevation (m)	Air pressure (hPa)	Mercury column (mmHg)	Elevation (m)	Air pressure (hPa)	Mercury column (mmHg)
0	1013.25	760.00	750	926.34	694.81	1500	845.56	634.22	2250	770.58	577.98
50	1007.26	755.51	800	920.76	690.63	1550	840.38	630.34	2300	765.78	574.38
100	1001.29	751.03	850	915.22	686.47	1600	835.23	626.48	2350	761.01	570.80
150	995.36	746.58	900	909.70	682.33	1650	830.11	622.63	2400	756.26	567.24
200	989.45	742.15	950	904.21	678.21	1700	825.01	618.81	2450	751.53	563.69
250	983.58	737.74	1000	898.74	674.11	1750	819.94	615.00	2500	746.82	560.16
300	977.73	733.35	1050	893.31	670.04	1800	814.89	611.22	2550	742.14	556.65
350	971.90	728.99	1100	887.90	665.98	1850	809.87	607.45	2600	737.49	553.16
400	966.11	724.64	1150	882.51	661.94	1900	804.87	603.70	2650	732.86	549.69
450	960.35	720.32	1200	877.15	657.92	1950	799.90	599.97	2700	728.25	546.23
500	954.61	716.01	1250	871.82	653.92	2000	794.95	596.26	2750	723.66	542.79
550	948.90	711.73	1300	866.52	649.94	2050	790.03	592.57	2800	719.10	539.37
600	943.22	707.47	1350	861.24	645.98	2100	785.13	588.90	2850	714.56	535.96
650	937.56	703.23	1400	855.99	642.04	2150	780.26	585.24	2900	710.05	532.58
700	931.94	699.01	1450	850.76	638.12	2200	775.41	581.60	2950	705.55	529.21

**No. 7980-S-11 WIND SPEED & DIRECTION SENSOR**

Wind speed:	Photointerrupter Withstand wind speed : 90 m/sec. Starting speed : 2 m/sec.
Wind direction:	Airplane type blades Potentiometer
Measuring range:	Wind speed: 2 to 70 m/sec. Wind direction: 0 to 540° (16 divisions)
2 X 5 VDC	: 0 to 5 VDC / 0 to 540° (540° = N-E-S-W-N-E-S)
Power requirements:	12 VDC
Power consumption:	23 mA
Size:	700 (D) x 760 (H) m/m
Weight:	Approx. 5.7 kg

**No. 7980-S-13 3-CUP TYPE WIND SPEED SENSOR**

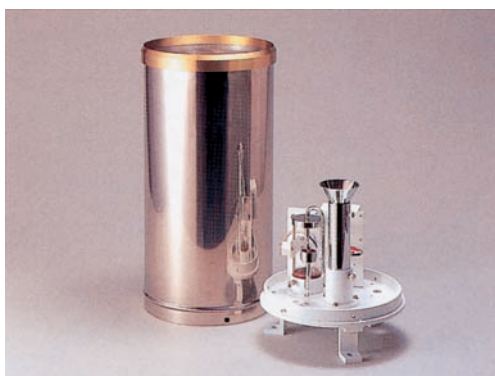
Type:	3-cup anemometer
Transducer:	AC generator
Measuring range:	2 to 70 m/sec.
Withstand wind speed:	80 m/sec.
Starting wind speed:	2 m/sec.
Output voltage:	Wind speed: 0 to 5 VDC / 0 to 70 m/sec.
Power requirements:	12 VDC
Power consumption:	10 mADC max.
Size:	300 (W) x 300 (H) mm
Weight:	1.0 kg

**No. 7980-S-40 RAINFALL SENSOR**

Sensor:	Tipping-bucket made of stainless steel
Orifice:	200 mm
Output:	0.5 mm amount of rainfall per tip
Switch:	Reed switch (contact time 0.1 second)
Contact rating:	1 ADC max., 250 VDC max.
Accuracy:	Within 2% (100 mm/hr.)
Size:	450 mm (H) x φ200 mm
Weight:	3.5 kg

**No. 7980-S-42 ELECTRICALLY HEATED RAIN AND SNOW GAUGE**

Sensor:	Tipping-bucket made of stainless steel
Orifice:	200 mm
Output:	0.5 mm amount of rainfall per tip
Switch:	Reed switch (contact time 0.1 second)
Accuracy:	Within 2% (100 mm/hr.)
Thermostat control:	10°C ±3°C
Power requirement for heater:	100 VAC (50/60 Hz)
Size:	450 mm (H) x φ200 mm
Weight:	5 kg

**No. 7980-S-43 RAINFALL INTENSITY SENSOR**

Type:	Water drop counting type
Measuring range:	0 to 100 mm/h
Orifice:	200 mm
Sensitivity:	0.0083 mm 1 pulse
Pulse conversion:	Optical system
Diameter of nozzle:	4.0 mm
Oil to be used for oil tank:	Kirosene
Power requirements:	12 VDC
Power consumption:	150 mA max.
Size:	460 mm (H) x φ200 mm
Weight:	3.5 kg



No. 7802-00
DIGITAL WIND SPEED AND DIRECTION INDICATOR
SPECIFICATIONS

Wind Speed and Direction Sensor

Wind direction: Aeroplane type counterbalanced tail, Potentiometer
Wind speed: Generated by 4 blade propeller
Starting speed: 2 m/s
Withstand speed: 90 m/s
Measuring range: Wind direction: 0 to 540°
Wind speed: 2 to 70 m/s
Output voltage: Wind direction: 0 to 5 VDC / 0 to 540° (540° = N.E.S.W.N.E.S.)
Wind speed: 0 to 5 VDC / 0 to 70 m/s
Power supply: 12VDC (consumption: 10 mADC max.)

Wind Speed and Wind Direction Indicator

Measuring range: Wind direction: 0 to 360° (16 div.)
Wind speed: 2 to 70 m/s
Input voltage: Wind direction: 0 to 5 VDC / 0 to 540°
Output voltage: Instantaneous/Mean Wind direction:
0 to 10 mV, 0 to 1 V / 0 to 540°
(Instant or mean selected by switch)
Instantaneous/Mean Wind speed:
0 to 10 mV, 0 to 1 V / 0 to 70 m/s
(Instantaneous and mean signals output simultaneously)

General rating

Display: Wind direction: 16 cardinal points, LED (dot display)
Wind speed: 3 digits, LED (7 segments)
Accuracy: Wind direction: Within ±5°
Wind speed: Within ±0.5 m/sec. at less than 10 m/s
Within ±5% at more than 10 m/s
Measuring system: Instant and mean (CR integration t = 120 sec.)
Power requirements: 100 VAC ±10% 50/60 Hz Power consumption: 100 mA max.
(Other AC voltage available upon order)
Operating temperature: 0 to +40°C
Storage temperature: -10 to +70°C
Relative humidity: 30 to 85% RH non-condensing
Environment: Should not contain corrosive gas.
Atmosphere of approximately 1,013 hPa



No. 7804-2
DIGITAL MICRO WIND SPEED AND DIRECTION INDICATOR
SPECIFICATIONS

Micro Wind Speed and Direction Sensor

Wind direction: Aeroplane type counterbalanced tail
Rotary encoder (8 bit gray code)
Wind speed: 4-blade propeller coupled to DC generator
Withstand wind speed: 70 m/s
Starting speed: 0.4 m/s
Measuring range: Wind direction: 0 to 540°
Wind speed: 0.4 to 50 m/s
Output voltage: Wind direction: 8 bit gray code / 0 to 540°
(540° = N.E.S.W.N.E.S.)
Wind speed: 0 to 2 VDC / 0 to 50 m/s
Power requirements: 12 VDC
Power consumption: 90 mA max.

Micro Wind Speed and Direction Indicator

Input voltage: Wind direction: 8 bit. gray code / 0 to 540°
Wind speed: 0 to 2 VDC / 0 to 50 m/s
Measuring method: Instant
Mean: CR integration t = 120 sec.
Output voltage:
Instantaneous wind direction: 0 to 10 mV, 0 to 1 V / 0 to 540°
Mean wind direction: 0 to 10 mV, 0 to 1 V / 0 to 540°
("Instant" and "Mean" are selected by the switch.)
(540° = N.E.S.W.N.E.S.)
Instantaneous wind speed: 0 to 10 mV, 0 to 1 V / 0 to 10 m/s
0 to 10 mV, 0 to 1 V / 0 to 50 m/s
Mean wind speed: 0 to 10 mV, 0 to 1 V / 0 to 10 m/s
0 to 10 mV, 0 to 1 V / 0 to 50 m/s
(Range of 0 to 10 m/s or 0 to 50 m/s is selected by wind speed selector)
(*4 to 20 mA output is available at option)
Display: Wind direction: 16 cardinal points: LED (dot display)
Wind speed: 3 digits: LED (7 segments)
Combined accuracy: Wind direction: Within ±5°
Wind speed: Within ±0.3 m/s under 5 m/s
Within ±5% of indicated value over 5 m/s

General Rating

Power requirements: 100 VAC ±10% 50/60 Hz (other voltage is available)
Power consumption: 100 VAC less than 100 mA
Operating temperature: 0°C to +40°C
Storage temperature: -10°C to +70°C
Relative humidity: 30 to 85% RH (non-condensing)
Ambient: Atmosphere of about 1013 hPa including no corrosive gases.

**No. 7790-00 WIND SPEED AND DIRECTION INDICATOR****SPECIFICATIONS****Wind speed and direction sensor**

Wind direction: Counterbalanced tail
 Wind speed: 4 blade propeller
 Transducer: Wind direction: synchro
 Wind speed: AC generator
 Dimensions: 760 (H) x 690 (W) mm
 Weight: approx. 3.0 kg

Indicator

Range: Wind direction: 360° continuous (16 divisions)
 Wind speed: 2 to 60 m/s (min. scale 1 m/s)
 Accuracy: Wind direction: within $\pm 5^\circ$
 Wind speed: within ± 0.5 m/s less than 10 m/s
 within $\pm 0.5\%$ at other than above

Power requirements: 100 VAC $\pm 10\%$
 Operation ambient: -10 to 50°C , 40 to 85% RH
 Dimensions: 170 (H) x 300 (W) x 150 (D) mm
 Weight: approx. 3.6 kg

**No. 7760-00 3-CUP ANEMOMETER**

Type: 3-cup anemometer
 Measuring range: 2 to 60 m/s
 Transducer: AC generator
 Starting speed: 2 m/s
 Power requirements: Self-generated
 Withstand wind speed: 80 m/s
 Accuracy: ± 0.5 m/s below 10 m/s
 $\pm 5\%$ above 10 m/s
 Cup size: 100 mm dia.
 Construction: Brass
 Two conductor cable: 10 m ($\phi 0.5$ mm²)
 Dimensions & weight (approx.): Sensor: 380 (H) x 310 mm (1.9 kg)
 Indicator: 180 (W) x 190 (H) x 130 (D) mm
 (1.7 kg)

**No. 7763-2 DIGITAL ANEMOMETER WITH ALARM****SPECIFICATIONS****Sensor**

3 cup anemometer	
Photo coupler system	
48 pulses per rotation	
1564 pulses per 60 m/s (wind speed)	
Measuring range:	2 to 60 m/s
Starting wind speed:	2 m/s
Withstand wind speed:	90 m/s
Measuring range:	2 to 60 m/s
Outer dimensions:	310 (W) x 380 (H) mm
Weight:	1.9 kg

Indicator with alarm

Measuring range:	0 to 60 m/s
Accuracy:	Within ± 0.5 m/s at below 10 m/s Within $\pm 0.5\%$ of the value at above 10 m/s

Alarm

Alarm set:	2 points
Range for setting:	0 to 60 m/s 2 digits digital switch 1 m/s step
Alarm display	1st alarm: Yellow LED lights. Signal by a buzzer 2nd alarm: Red LED lights. Signal by a buzzer
Alarm output:	Relay contact output (NO, NC) Contact capacity (110 VAC, 24 VDC 3A)
Buzzer:	Selectable ON or OFF by switch
Alarm reset:	Manual reset
Optional output:	0 to 10 mVDC, 0 to 1 VDC, 4 to 20 mA, BCD output

Display

Instantaneous wind speed:	3 digits LED, 7 segments
Mean wind speed:	3 digits LED, 7 segments
Methods of measurements:	Instant Mean (selectable interval 1, 2 or 10 min.)
Power requirements:	100 VAC $\pm 10\%$ 50/60 Hz
Outer dimensions:	263 (W) x 136(H) x 239 (D) mm
Weight:	3.5 kg
Panel-cut size:	256 (W) x 129 (H) mm

**No. 7720-00 HAND HELD ANEMOMETER****SPECIFICATIONS**

System:	Cup-generation system
Measuring range:	2 to 30 m/s
Accuracy:	Within ± 1 m/s at less than 10 m/s Within $\pm 10\%$ at more than 10 m/s
Starting wind speed:	1.5 m/s
Withstand wind speed:	40 m/s
Outer dimensions:	$\phi 187$ x 380 (H) mm Case: 450 x 250 x 200 mm
Weight:	Approx. 2.5 kg inclusive of a remote cable (2 m) and case
Standard accessories:	Remote measuring cable 2 m, carrying case

No. 7730-00 HAND HELD COMBINATION ANEMOMETER**SPECIFICATIONS**

Component:	Wind speed generating section, wind speed indicating section, wind direction indicating section
Measuring range:	2 to 30 m/s, 16 divisions 360°
* Wind direction can not be measured remotely.	
	Specifications of wind speed section conform to those of No. 7720.
Outer dimensions:	350 x 380 (H) mm
Weight:	3.0 kg
Standard accessories:	Remote measuring cable 2 m, carrying case

**No. 7932-02 DIGITAL RAIN GAUGE WITH ALARM**

Components: Rainfall sensor, Indicator, 20 m cable

SPECIFICATIONS OF SENSOR

Type of sensor: Tipping bucket type rainfall sensor
 Output: 1 contact point pulse per 0.5 mm of rainfall amount
 Dimensions: Orifice ϕ 200mm x 450 (H) mm
 Weight: Approx. 2.2 kg

SPECIFICATIONS OF INDICATOR

Measuring range: 0 to 1000 mm (repeat)
 Display range: 000.0 to 999.5 mm
 Setup Time: 1 to 99 minutes
 Alarm points: 1 point (Integrated amount or Amount per setup time)
 Alarm setting range: 0 to 999 mm
 Power requirements: 100VAC \pm 10%, 50/60Hz
 (Built-in battery works for approx. 7 hours at the time of blackout)
 Power consumption: 150mA max.
 Dimensions: 206 (W) x 106 (H) x 305 (D) mm
 Weight: Approx. 4.0 kg

**No. 7933-10****DIGITAL RAIN GAUGE WITH ALARM AND ANALOG OUTPUT**

Components: Rainfall sensor, Indicator, 20 m cable

SPECIFICATIONS OF SENSOR

Type of sensor: Tipping bucket type rainfall sensor
 Output: 1 contact point pulse per 0.5 mm of rainfall amount
 Dimensions: Orifice ϕ 200mm x 450 (H) mm
 Weight: Approx. 2.2 kg

SPECIFICATIONS OF INDICATOR

Measuring range: Integrated amount: 0 to 1000 mm (repeat)
 Amount per setup time: 0 to 1000 mm (repeat)
 Display range: 000.0 to 999.5 mm
 Analog output: 0 to 10mVDC, 0 to 1VDC (repeat)
 Integrated amount: 0 to 1000 mm
 Amount per setup time: 0 to 100 mm
 (Option: 4 to 20mADC)
 Contact point capacity: 10A/120VAC, 8A/24VDC
 Setup Time: 1 to 99 minutes
 Alarm points: 2 point
 Alarm setting range: 0 to 999 mm
 Power requirements: 100VAC 10%, 50/60Hz
 (Built-in battery works for approx. 7 hours at the time of blackout)
 Power consumption: 200mA max.
 Dimensions: 263 (W) x 136 (H) x 340 (D) mm
 Weight: Approx. 6.0 kg

**No. 7980-S-40 RAINFALL SENSOR**

Sensor:	Tipping-bucket made of brass
Orifice:	200 mm
Output:	0.5 mm amount of rainfall per tip
Switch:	Reed switch (contact time 0.1 second)
Contact rating:	1 ADC max, 250 VDC max.
Accuracy:	Within 2% (100 mm/hr.)
Size:	450 mm (H) x ϕ 200 mm
Weight:	3.5 kg

No. 7820-00 EVENT RECORDER

This instrument can be connected with a tipping bucket rain gauge and the pulse is to be recorded on the chart.

SPECIFICATIONS

Mechanism:	Solenoid ratchet drive the pen with snail cam. Returns to zero at 100 pulses and rises again
Measuring range:	Pulse counting method (0 \rightarrow 100)
Input pulse:	3 VDC 100 mA more than 0.1 sec.
Speed of pen:	Moves by the half of scale per pulse returns to zero point at 100 pulses.
Clock rotation:	1 day and 7 day by change gear provided.
Power requirements:	"C" size battery x 1 pc., "D" size battery x 2 pcs.
Standard accessories:	1 pad of 7 day chart (55 sheets/pad), batteries
Dimensions:	300 x 140 x 200 (H) mm
Weight:	Approx. 3.7 kg

Consumable:

No. 7820-60	1 day chart (400 sheets/pad)
No. 7820-62	7 day chart (55 sheets/pad)

**No. 7860-00 COPPER RAIN GAUGE**

Rain enters orifice with a diameter of 200 mm and retained.

Outer dimensions:	ϕ 200 x 600 mm
Weight:	3.4 kg

No. 7880-00 RECEIVING POT

This is placed in a rain gauge rain bucket to store water.

Outer dimensions:	ϕ 150 x 300 mm
Weight:	0.9 kg

No. 7900-00 CYLINDER FOR RAIN GAUGE

Measures rain collected in a receiving pot with rain measuring cylinder.
(Use for measuring 10 mm of rain)

Outer dimensions:	ϕ 60 (water collecting mouth) ϕ 100 (base) x 37 mm
Weight:	0.7 kg